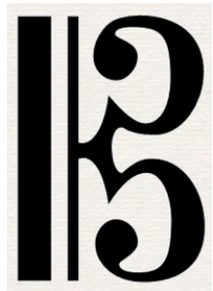




## TEST YOUR KNOWLEDGE – ATAR MUSIC MUSICAL LITERACY

### 'Clefs' Questions

- 1. The Treble clef is sometime also known as the:**
  - a) First clef
  - b) C Clef
  - c) F Clef
  - d) G Clef
- 2. Unpitched percussions and drums play on which clef:**
  - a) Percussion clef
  - b) Rhythm clef
  - c) Neutral clef
  - d) All the above
- 3. This clef is known as:**
  - a) Alto clef
  - b) Tenor clef
  - c) C clef
- 4. How many positions of C clef are in common use today?**
  - a) 2
  - b) 3
  - c) 4
  - d) 5
- 5. Which line of the staff is a Tenor clef centered on?**
  - a) Top
  - b) 2nd highest
  - c) Middle
  - d) 2nd Lowest
  - e) Bottom
- 6. Different clefs are employed because:**
  - a) Composers hate music students
  - b) Each one can be tailored to where the instrument/voice sits more naturally
  - c) JS Bach systemised these, so they must be used



**7. In Treble clef, the middle line pitch is:**

- a) A
- b) B
- c) C
- d) G

**8. In Bass clef, the middle line pitch is:**

- e) A
- f) B
- g) C
- h) D

**9. In Alto clef, the middle line pitch is:**

- a) A
- b) B
- c) C
- d) D

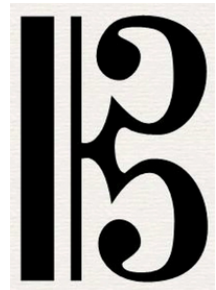
**10. In Tenor clef, the middle line pitch is:**

- a) A
- b) B
- c) C
- d) D

**SCROLL TO PAGE 3 FOR ANSWERS**

## 'Clefs' Answers

- 1. The Treble clef is sometime also known as the:**
  - a) First clef - FALSE - think about which note the clef is centered around
  - b) C Clef - FALSE - think about which note the clef is centered around
  - c) F Clef - FALSE - think about which note the clef is centered around
  - d) TRUE - G Clef - Correct! Remember that when drawing the treble clef, we are centred around the second bottom line
- 2. Unpitched percussions and drums play on which clef:**
  - a) Percussion clef - correct, but there are other names
  - b) Rhythm clef - correct, but there are other names
  - c) Neutral clef - correct, but there are other names
  - d) All the above - Correct!
- 3. This clef is known as:**
  - a) Alto clef - Maybe ... but without the staff of 5 lines, we don't know what the pitch centre is, so we can only say this is a generic C Clef
  - b) Tenor clef - Maybe ... but without the staff of 5 lines, we don't know what the pitch centre is, so we can only say this is a generic C Clef
  - c) C Clef. Correct!
- 4. How many positions of C clef are in common use today?**
  - a) 2 - Correct! The Alto and Tenor clef
  - b) 3 - Sorry ... only 2 clefs are used commonly - Alto and Tenor
  - c) 4 - Sorry ... only 2 clefs are used commonly - Alto and Tenor
  - d) 5 - While there are 5 C clefs, only the Alto and Tenor clefs are in common use today
- 5. Which line of the staff is a Tenor clef centered on?**
  - a) Top - Almost, but that would make it a Baritone clef
  - b) 2nd highest - Correct!
  - c) Middle - almost, but this would make it an Alto clef
  - d) 2nd Lowest - Oops! ... this would make it a Mezzo-soprano clef
  - e) Bottom - Oops! ... this would make it a Soprano clef
- 6. Different clefs are employed because:**
  - a) FALSE - Composers hate music students
  - b) TRUE - each one can be tailored to where the instrument/voice sits more naturally
  - c) FALSE - JS Bach systemised these, so they must be used



**7. In Treble clef, the middle line pitch is:**

- a) A - Close, but not quite ... the A pitch is on the second space
- b) B - Correct!
- c) C - Oops! The C pitch is on the second space, or the first ledger line below the staff
- d) G - Almost ... the G pitch is on the second line

**8. In Bass clef, the middle line pitch is:**

- a) A - Oops! Rethink where the F pitch is centred, and count down two notes from there ... the A pitch is either the top line or bottom space
- b) B - Oops! Rethink where the F pitch is centred, and count down two notes from there ... the B pitch is either the second line or sitting just above the top line.
- c) C - Oops! Rethink where the F pitch is centred, and count down two notes from there ... the C pitch is either the second space, or the first ledger line above the staff
- d) D - Correct!

**9. In Alto clef, the middle line pitch is:**

- a) A - Almost ... the A pitch is on the second line
- b) B - Almost ... the B pitch is on the second space
- c) C - Correct!
- d) D - Almost ... the D pitch is on the third space

**10. In Tenor clef, the middle line pitch is:**

- a) A - Correct!
- b) B - Close, but not quite ... the B pitch is on the third space
- c) C - Oops! The C pitch is on the third line - remember that the Tenor clef is a C Clef, so it's centered around the C on the fourth line
- d) D - Oops! Rethink where the C pitch is centred, and count down two notes from there ... the D pitch is in the top space