



# GETTING TO UWA SORTED

Bus or train? TransPerth will easily get you to class on time. Check the daily timetable [here](#) or download the app on your phone.

UWA is 6km away from Beatty Lodge and takes around 10 minutes in a car or 30 minutes on public transport.



SmartRiders are the easiest way to pay for public transport. Reusable, convenient and the cheapest way to travel, giving you a 10% discount off the cash fare.

Buy a SmartRider at [these Info Centres](#).

Bus numbers 402, 403 & 404 leave from Cleaver Street (2 minutes walk) and arrive at Perth Busport, journey time around 8 minutes.

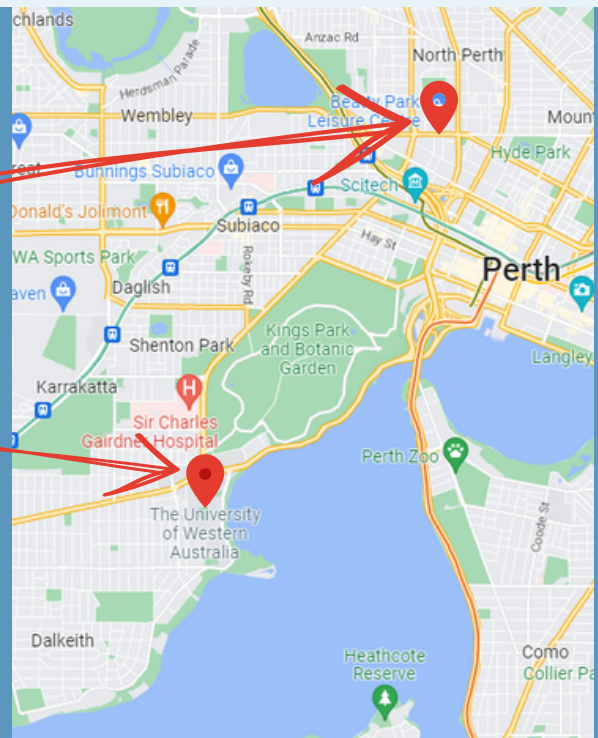
You will then need to walk through Perth City to Elizabeth Quay Bus Station (10 minute walk) where you can hop on bus numbers 950 or 995 to UWA.

Jump on board any CAT bus for free. The **PURPLE CAT** runs from Elizabeth Quay bus station to UWA.

Blue, red, green, yellow or purple CAT buses frequently transport around the centre of Perth. Here is the timetable and map.

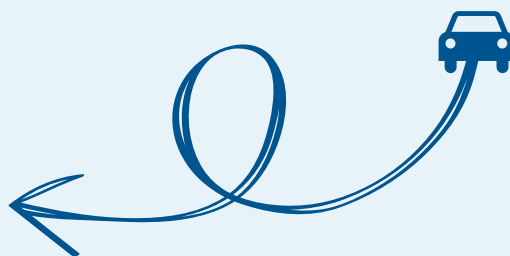
**BEATTY LODGE**

**UWA CAMPUS**



**UWA CAMPUS MAP**

**UWA PARKING MAP**



BEATTY LODGE ADDRESS 235 VINCENT STREET, WEST PERTH 6005

UWA CAMPUS ADDRESS 35 STIRLING HWY, CRAWLEY 6009